



**Florida Department of Environmental Protection**

# **Recycling in Florida Overview**

**Karen Moore**

**January 25, 2017**





# Recycling Goals

- 403.706, F.S.
  - The Legislature set a 75% statewide recycling goal for municipal solid waste by 2020.
    - Generated by residential, commercial, and institutional sources
    - Does not include industrial or manufacturing waste.
    - For 2015, the milestone recycling rate was 50%. For 2016 and 2017, it increases to 60%. For 2018 and 2019, it goes to 70%. For 2020, it will be 75%.
  - The Legislature also set that same goal for all counties over 100,000 population.
    - The Legislature has directed all counties to report their recycling progress to DEP annually.



# Recycling Authority

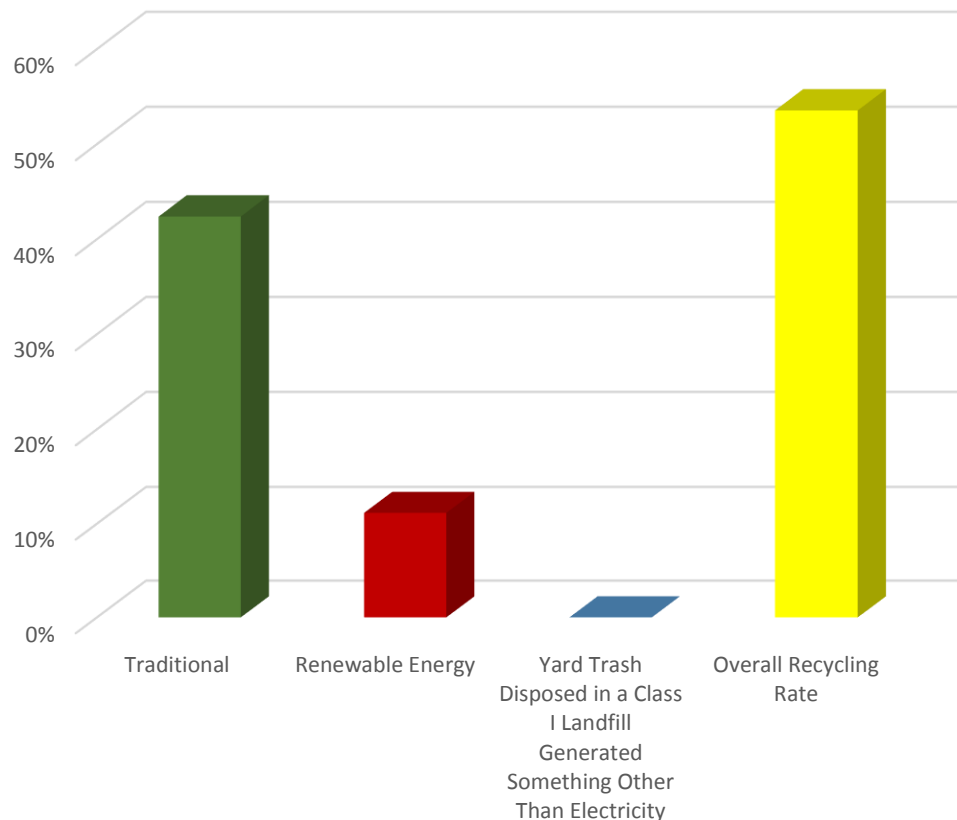
- 403.7032 (4), F.S. Develop a comprehensive recycling program to include:
  - Programs to identify environmentally preferable purchasing (DMS to report on green and recycled products purchased)
  - Programs to educate students in grades K-12
  - Programs for statewide recycling recognition
  - Program for municipalities and counties to develop and implement efficient recycling efforts
  - Programs to provide technical assistance to municipalities and counties
  - Programs to educate and train the public
  - Evaluation of how financial assistance can best be provided to municipalities and counties in support of recycling
  - Evaluation of why existing waste management and recycling programs have not been better used



# Florida's 2015 Recycling Rate

- The statewide **overall recycling rate**, which **includes renewable energy\* recycling credits**, increased from **50% (2014) to 54% (2015)**.
  - The Legislature set an interim milestone recycling goal of 50% for calendar year 2014 and 60% for calendar year 2016.
- The statewide **traditional recycling rate**, which **excludes renewable energy recycling credits**, increased from **39% (2014) to 42% (2015)**.

Recycling Credit (%)

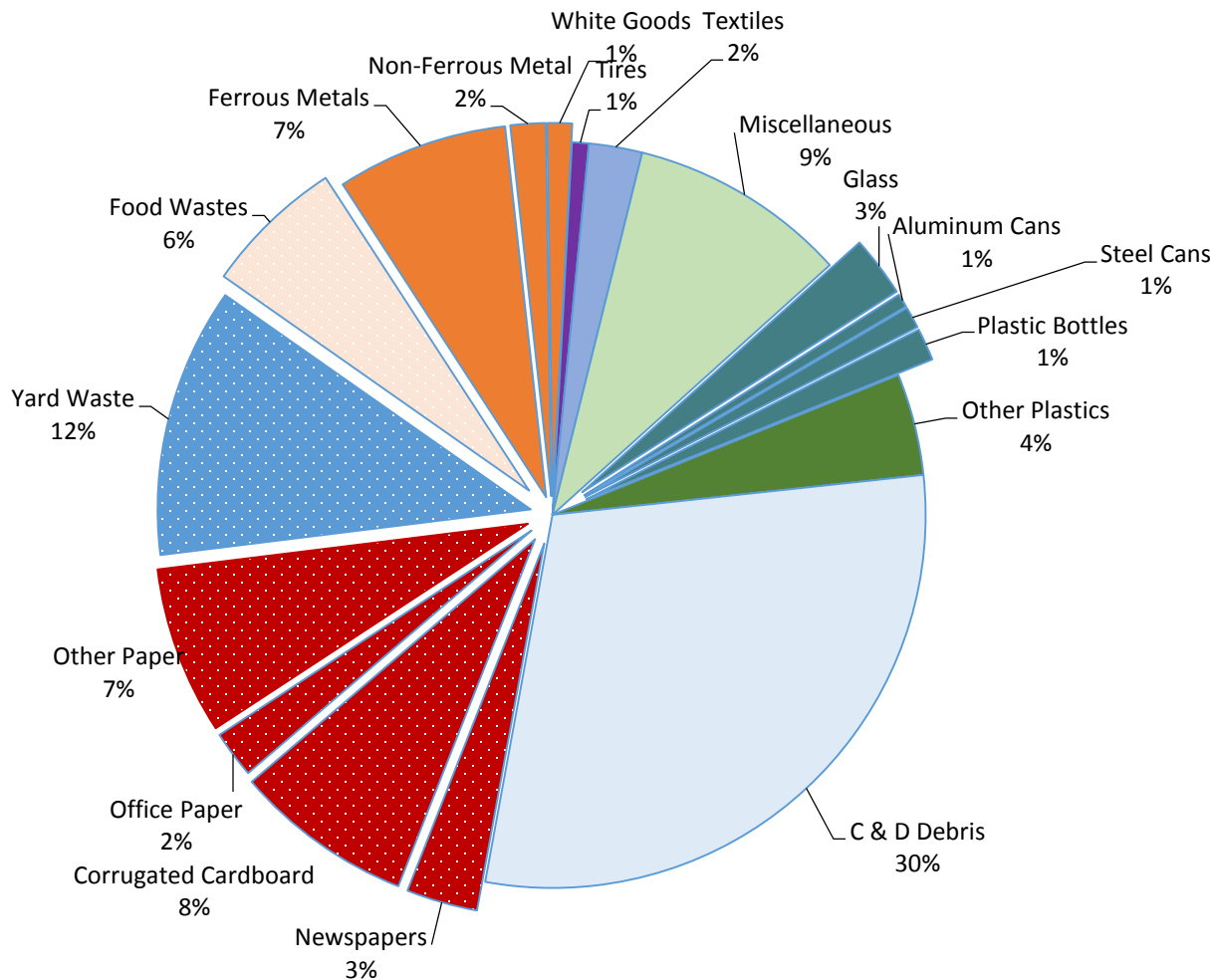


\*Electricity produced from MSW or landfill gas



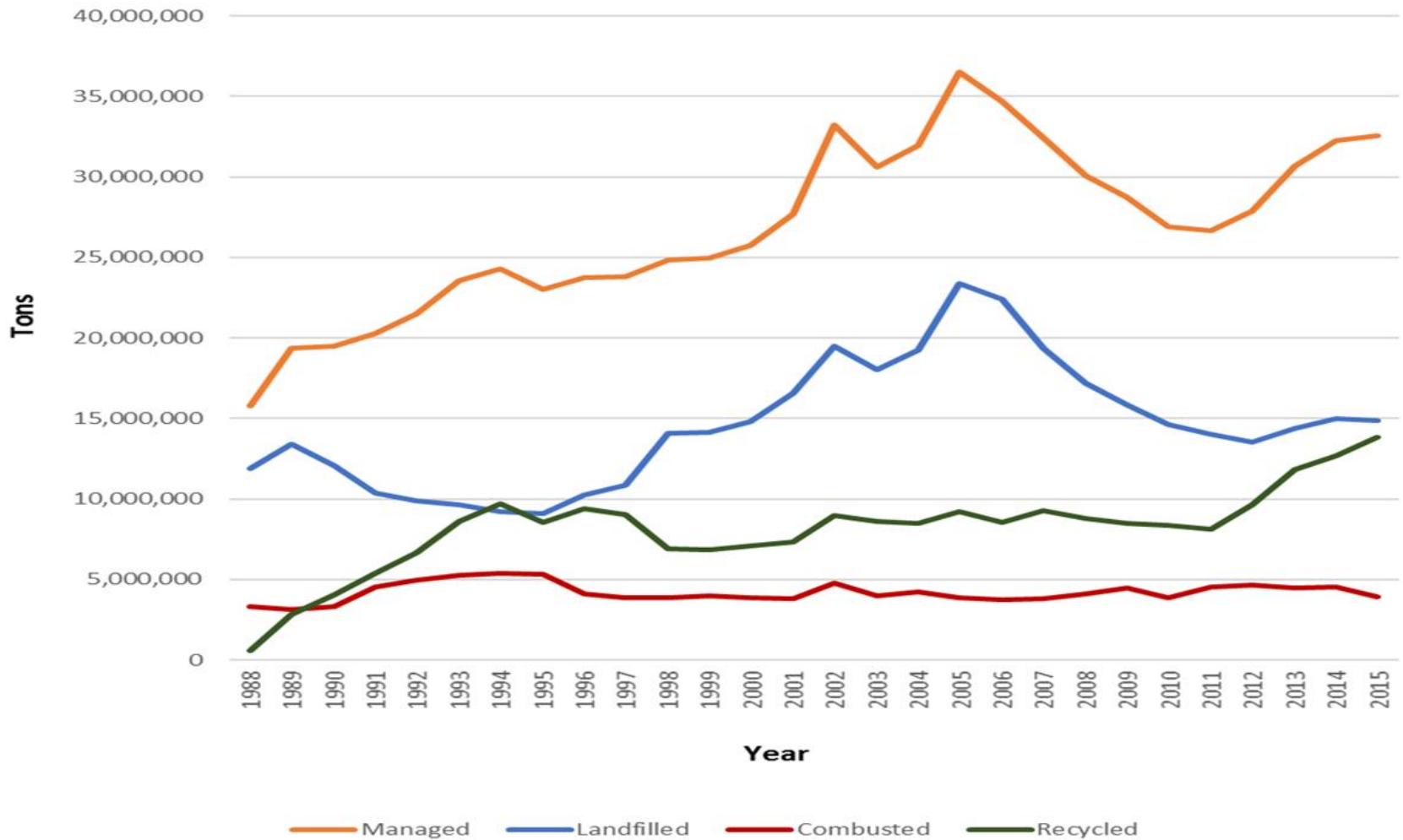
# Florida's MSW Waste Composition

## Florida Municipal Solid Waste Collected (2015) (32.5 million tons)





# Solid Waste Management in FL (1988-2015)





# Recycling Outreach

- Webinars
  - Hosted a series of webinars concerning various issues associated with recycling in Florida
  - The webinar series presented important and relevant information
    - over 20 presenters
    - over 300 recycling professionals participating
  - Topics
    - Contamination issues in single-stream recycling
    - Electronic waste in MSW
    - Organics in MSW (three part series)
    - Construction & Demolition
- LISTSERV
  - Encourage discussion and dialogue of important topics amongst those that drive recycling in the state
  - Florida Recycling Coordinator ([frc@lists.dep.state.fl.us](mailto:frc@lists.dep.state.fl.us))
    - Closed group for county and city recycling coordinators
  - 75% by 2020 ([75by20@lists.dep.state.fl.us](mailto:75by20@lists.dep.state.fl.us))
    - Open group for all interested parties in recycling industry



# Recycling Outreach

- Workshops

- Recycling Business Development Technical Advisory Group Meeting
- Florida Organics Recycling Workshop

- Strategic Planning

- Organics
  - Strategic planning session and stakeholder's discussion with at the RFT annual conference in St. Augustine on June 14<sup>th</sup>.
  - Organics Technical Advisory Group (TAG)
    - Focusing on actionable items, policy and programs





# Recycling Recognition Program

- Recycling Recognition Program
  - Encourage organizations and citizens to increase recycling
  - Data collection through DEP Business Recycling Tracking Tool (Re-TRAC)
- DEP's Recycling Recognition Program has focused on publicly recognizing **“outstanding” recycling efforts** from what is commonly called the **commercial sector**
  - That sector includes businesses and institutions in both the public and private sector
- DEP's definition of “outstanding” recycling efforts is tied to the **interim milestone recycling goals** established by the Legislature
- In 2015-16 DEP has recognized 6 organizations include the Walt Disney World, Skanska Construction, Palm Beach County BOCC and Florida Gulf Coast University, Miami Marlins, Northrop-Grumman





# Challenges for Meeting the Recycling Goals

- Single Stream Recycling
  - Contamination
- Materials Recycling
  - Construction and Demolition Debris
  - Organics
- Markets



# Florida DEP

Karen Moore

Karen.S.Moore@dep.state.fl.us

850-245-8864

<http://www.dep.state.fl.us/waste/categories/recycling/default.htm>